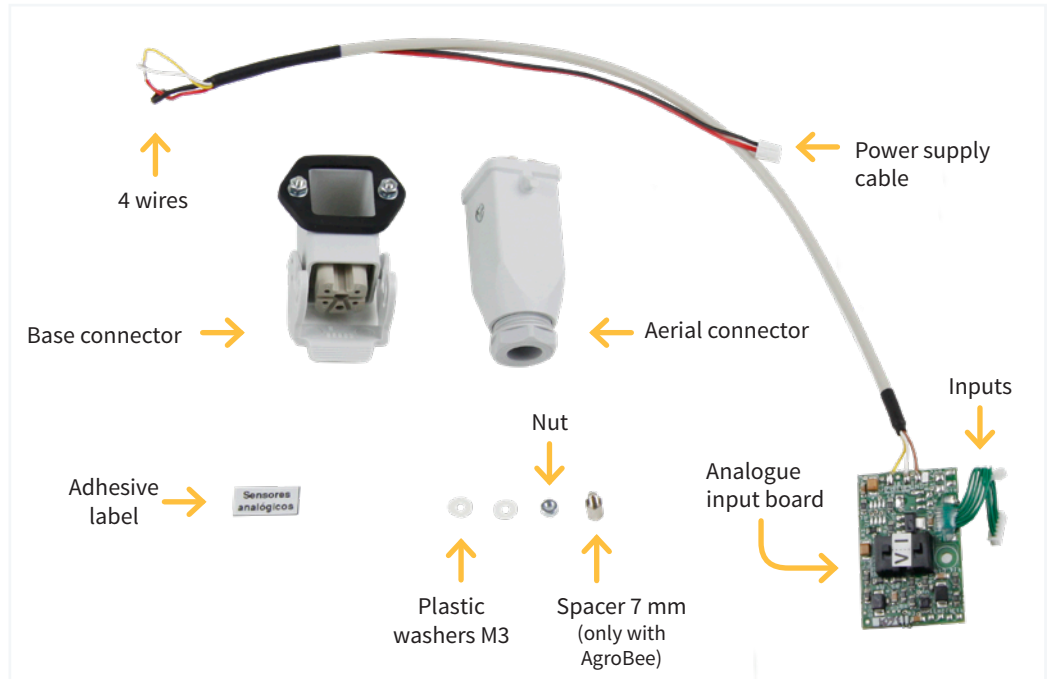


Installation option 2 analogue inputs

SUPPLIED MATERIAL

- Analogue input board with cables
- Base connector
- Aerial connector
- Adhesive label
- 2 M3 washers
- Nut
- Spacer 7 mm (only for models with AgroBee option)



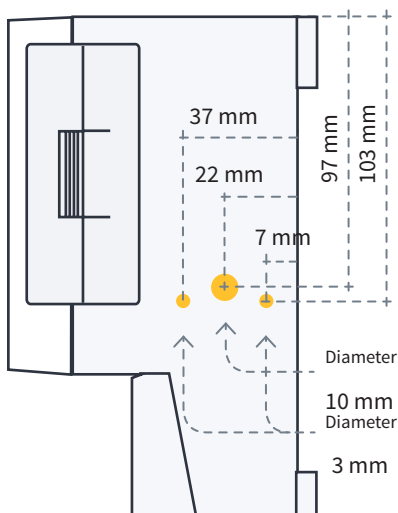
BOX FORMAT ASSEMBLY

- 1** Disconnect power from the controller.

- 2** Remove the four screws that hold the keyboard.

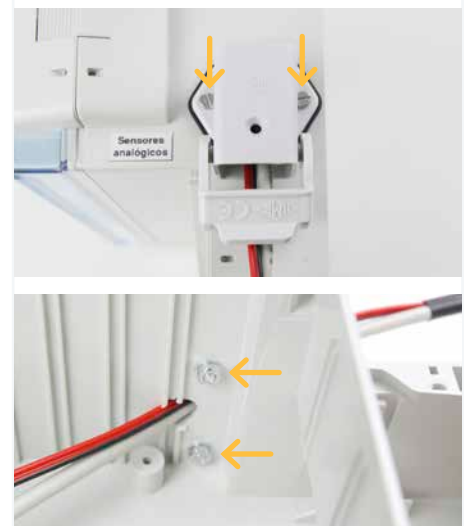
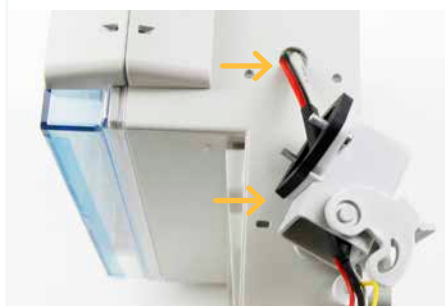
- 3** Unscrew and remove the two plates from the controller.

- 4** Make three holes in the box as shown in the image. Use the attached template.



- 6** Screw the base connector to the box, place one washer and one nut per screw on the inside.

- 5** Pass the board cable through the base connector and the large hole made in the box.



- 7** Connect the four wires of the cable from the analogue input board to the corresponding terminal



No. 1 - White No. 2 - Yellow
No. 4 - Black No. 3 - Red

- 10** Connect the inputs to 2EA on the microprocessor board.



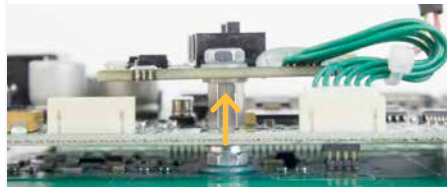
- 13** Reconnect the cables between the two boards.



- 8** Insert the connections in the base connector and screw.



- 11** Place the plastic washer on the spacer, then the plate, another plastic washer and the nut.



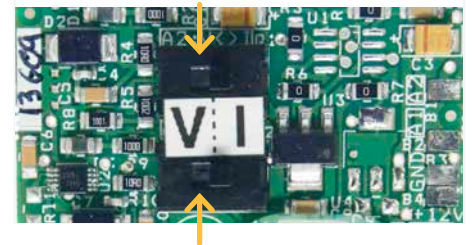
- 14** Close the equipment by replacing the four screws removed at point 2 and assemble the aerial connector with the base connector.



- 9** Replace the motherboard and its five screws back in the controller and connect the power cable to H3 or H1 depending on the motherboard model.



- 12** Set selectors A1 and A2 to "V" (voltage) or "I" (current) depending on the type of sensor to be connected. By default they will be in current.



- 15** If the Plus option is not showing on the equipment, it must be activated. If all steps have been completed, the installation is complete. To finish, configure the equipment referring to the A-2500 Plus manual.

ASSEMBLY FOR RECESSED FORMAT AND MODEL WITH AGROBEE OPTION

- For assembling the recessed format, follow the same steps as the box format, changing point 4 to:
Break the die with a gentle strike using a screwdriver or similar.



- Assembly example for models with AgroBee option. Place the separator on top of the AgroBee plate and continue with the same steps.

