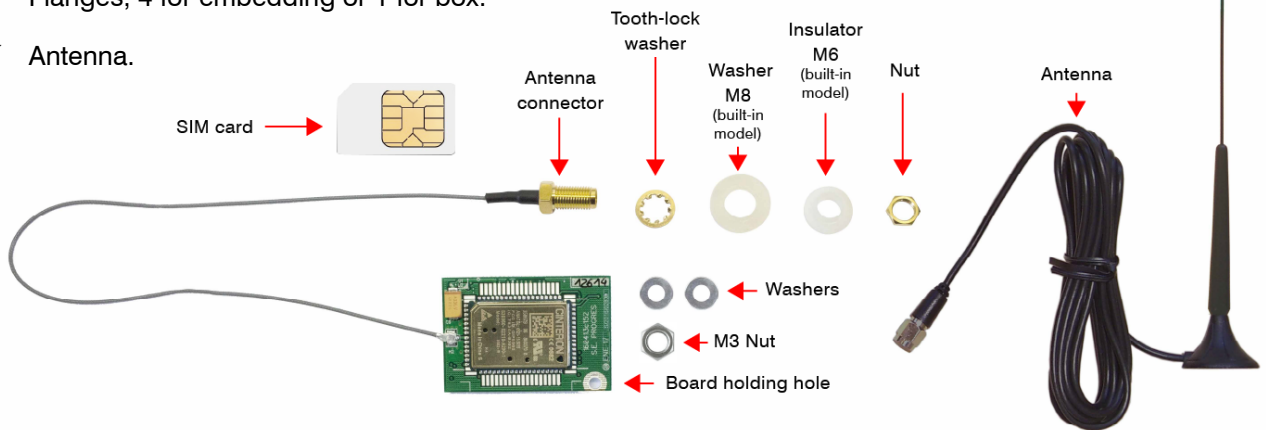


NECESSARY MATERIAL:

- ✓ GPRS modem board with 2 washers and 1 M3 nut.
- ✓ Antenna connector hose with 1 nut and 1 glower. In the built-in model, an M6 insulator and an M8 washer will also be supplied, to isolate the antenna connector from the metal box.
- ✓ Adhesive Brackets for flanges, 4 for embedding or 1 for box.
- ✓ Flanges, 4 for embedding or 1 for box.
- ✓ Antenna.



IMPORTANT: Before installing the modem, the controller must be updated to the current version, and activate the option, if applicable.

MOUNTING BUILT-IN MODEL:

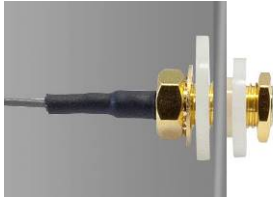
1. Disconnect power to the controller.
2. Remove the 6 screws that hold the keyboard.
3. Lift the keyboard.
4. Place the modem behind the keyboard. First, place one of the supplied washers between the keyboard spacer and the modem circuit. Then place another washer between the modem and the nut.



The GPRS modem will only be properly installed if its connector is fully mated to the keyboard board connector, without any space between them.

Be careful not to tighten the nut too much, it can reverse effect and lift the modem from the other side.

5. Antenna connector attachment: the connector will be located in the hole designated for this purpose located at the back of the metal drawer indicated as "gsm /gprs". Break the die by tapping it with a screwdriver or similar.

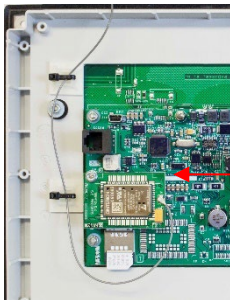


Inside the drawer, to isolate the drawer connector, first the glower will be placed and then the M8 plastic washer. And on the outside, first the M6 plastic insulator and then the nut to fix the connector.

6. Place the SIM card as shown in the photo.

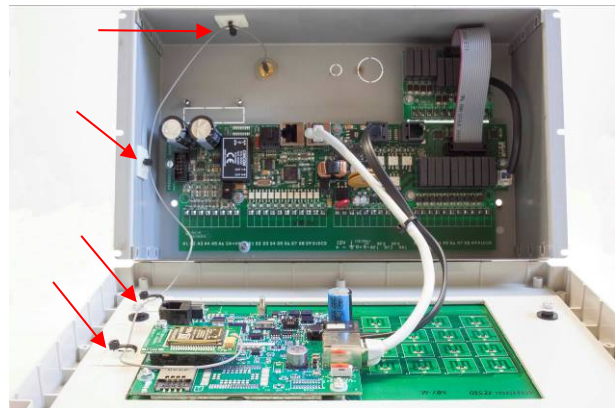


7. Place the adhesive Brackets for the flanges as shown in the photo.



IMPORTANT:

The antenna hose must NOT pass over the control board



8. Close the controller, take special care not to trap the antenna hose cable between the plastic frame and the metal drawer of the controller.
9. Place the screws removed at point 2.
10. Connect the antenna by placing it at a high point so that it has the best visibility towards the GSM/GPRS central and to achieve correct coverage.
11. If all the steps have been carried out, the installation of the GPRS modem is already completed, you only need to power up the controller and carry out the corresponding configuration.

Do not power the controller without first connecting the antenna, as the modem may be damaged.

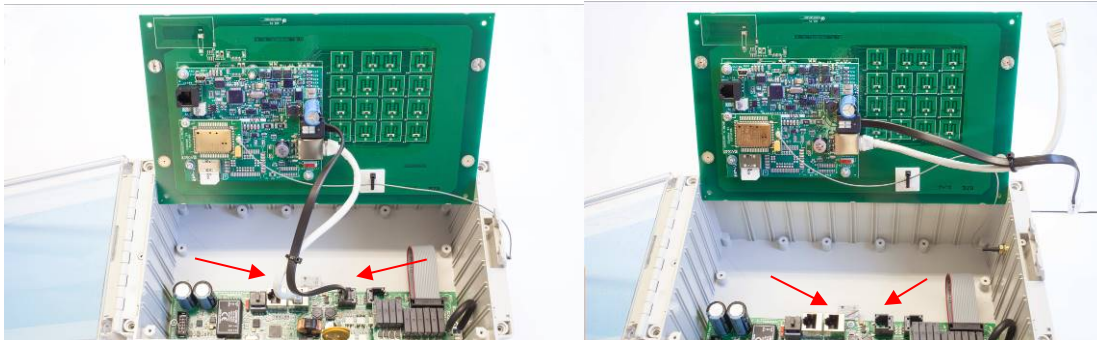
MOUNTING BOX MODEM:

1. Disconnect power to the controller.



2. Remove the 4 screws that hold the keyboard.

3. Lift the keyboard and disconnect the 2 wires that connect the keyboard board with the outputs board.



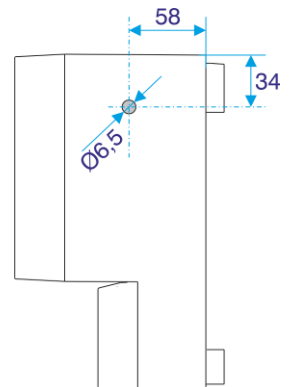
4. Place the modem behind the keyboard. First, place one of the supplied washers between the keyboard spacer and the modem board. Then place another washer between the modem and the nut.



The GPRS modem will only be properly installed if its connector is fully mated to the keyboard board connector, without any space between them.

Be careful not to tighten the nut too much, it can reverse effect and lift the modem from the other side.

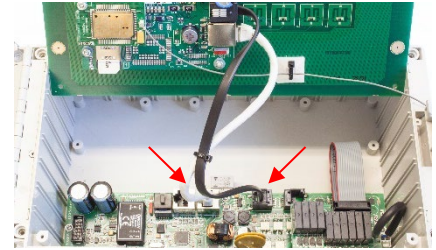
5. Antenna connector fastening: make a hole in the right side of the box according to the measurements in the following drawing.



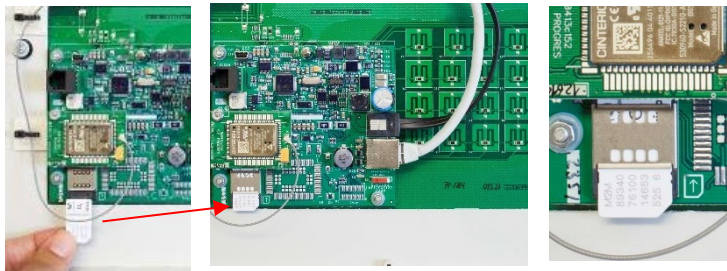
6. Place the connector and fasten it by means of the nut on the outside, and the glower on the inside.



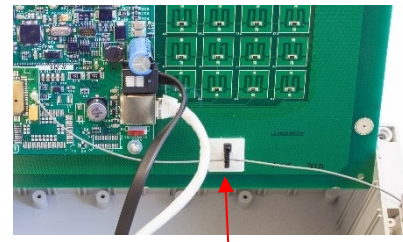
7. Reconnect the two cables disconnected at point 3.



8. Place the SIM card as shown in the photo.



9. Place the adhesive support for the flange as shown in the photo.



10. Close the controller and place the screws removed in point 2.

11. Connect the antenna by placing it at a high point so that it has the best visibility towards the GSM/GPRS central and to achieve correct coverage.

12. If all the steps have been carried out, the installation of the GPRS modem is already completed, you only need to power up the controller and carry out the corresponding configuration.

Do not power the controller without first connecting the antenna, as the modem may be damaged

Sistemes Electrònics Progrés, S.A.

Polígon Industrial, C/ de la Coma, 2
25243 El Palau d'Anglesola | Lleida | España
Tel. 973 32 04 29 | info@progres.es
www.progres.es