

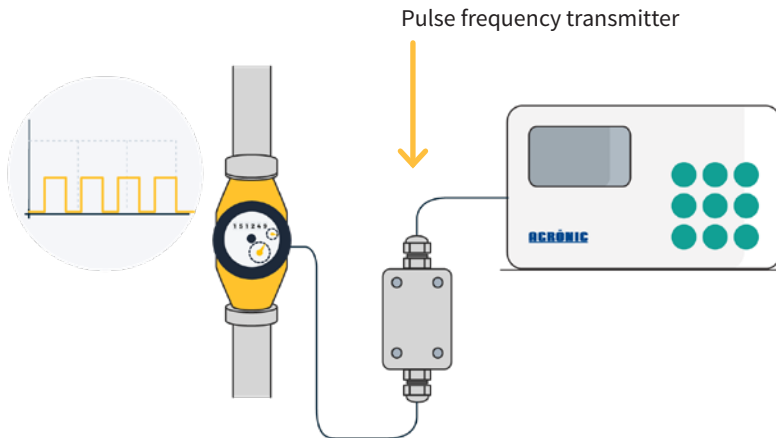
# Pulse frequency transmitter

CODE 06750012

Transmitter that converts frequency meter signals to voltage-free contact pulses.

It allows for working with frequency meters in controllers that only have pulse meter inputs (such as the Agrònic 2500)

The controller leaves the factory adjusted to the frequency/pulse conversion specified by the user, and it can be configured using a Module Reader.



## Technical characteristics

### Power supply

Power source:	12 Vdc to 20 Vdc	
Energy consumption	Less than 0.4 W	
Overtoltage fuse:	Input	Thermal (PTC) 0.4 A at 25°C Self-resetting
Reverse Current Protection:	Yes	

### Outputs

Output signal	Photo Relay Contact (voltage-free)	1 output
	1 pulse (200 ms) each No. of programmed cycles	

### Inputs

Number	1
Type	Digital (by frequency, up to 320 Hz)

### Environment

Temperature	-10°C to +60°C
Protection level	IP65
Moisture	< 95%
Altitude	2000 m
Pollution	Grade II

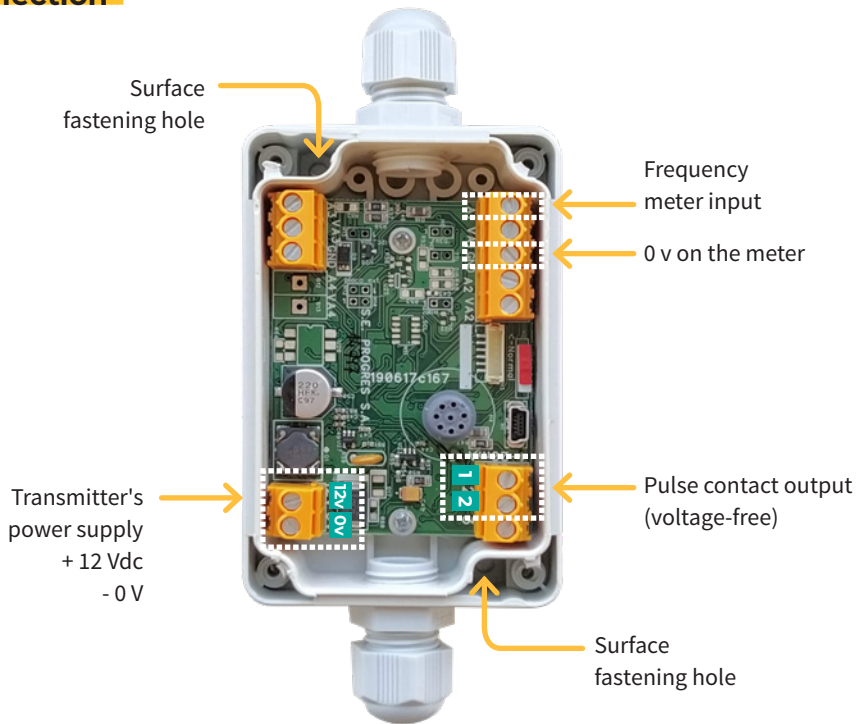
### Transmitter box dimensions

Height	99 mm
Width	65 mm
Depth	39 mm
Weight (approx.)	0.4 Kg



This symbol indicates that electronic devices should not be disposed of along with household waste at the end of its useful life. The product must be taken to the corresponding collection point for recycling and properly treating electronic equipment in accordance with the national legislation.

## Connection








Place the controller as close to the meter as possible. Insert the cable through the box's PG-9 cable gland and pull it as tightly as possible.

**NOTE** The same transmitter power supply can be used to power the meter.

## Configuration



Transmitters generally come factory-configured. However, it is possible to perform consultations or configurations by using a “Module Reader,” consisting of a screen and four keys, which connects to the transmitter through the only visible connector on the inside.

Press the  key to enter the main menu. Change the options within the menu with the  and  keys. Press the  key to enter the selected menu option. Return to the upper hierarchy's menu option with the  key.

The following options can be seen within the main menu:

- Consultation
- Configuration

### CONSULTATION MENU

General consultation menu of the transmitter, where you can see:

- Controller firmware's version No.
- Transmitter type
- Instant frequency (in Hz) entering from the A1 input

### CONFIGURATION MENU

Transmitter parameter configuration menu.

You can configure:

- Hz / pulse: Ratio of how many cycles (Hz) have to be entered for the transmitter to generate a pulse