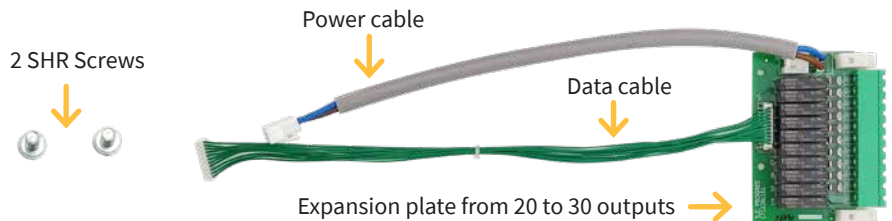


Installation expansion from 20 to 30 outputs

SUPPLIED MATERIAL FOR THE BUILT-IN FORMAT

- 2 SHR Screws
- Expansion plate from 20 to 30 outputs



BUILT-IN FORMAT ASSEMBLY

1 Disconnect the power to the controller.

4 Knock out the die-cut, giving it a little tap with a screwdriver or something similar.



7 Connect the data cable to the main board. Carefully squeeze it so that it is securely connected.



10 Close the controller and replace the screws removed in point 2 and the cables in point 3. At this point the installation would be finished.

2 Remove the 6 screws that hold the keyboard.



5 Set the 30-output expansion plate on the inside, and screw it in.



8 Connect the power cable from the 20-output expansion board to the 30-output expansion board.



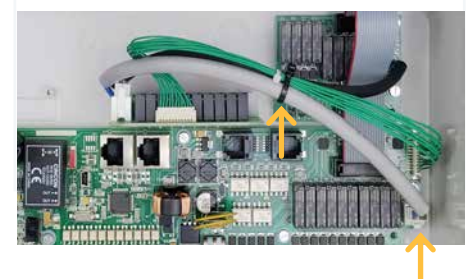
3 Lift up the keyboard and disconnect the 2 cables that connect the keyboard plate to the motherboard.



6 Disconnect the power cable from the 10- to 20-output expansion board.

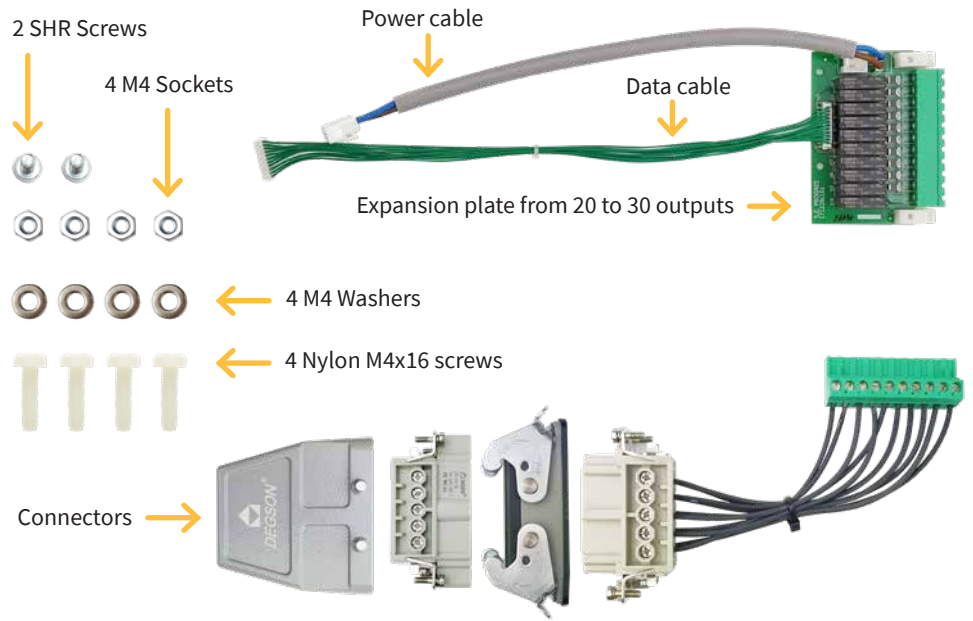


9 Connect the power cable, from the 30-output expansion board, to the motherboard. Secure the 3 cables with a cable tie.



SUPPLIED MATERIAL FOR THE BOX FORMAT

- 2 SHR Screws
- 4 M4 Sockets
- 4 M4 Washers
- 4 Nylon M4x16 screws
- Expansion plate from 20 to 30 outputs
- Connectors
- Template for holes



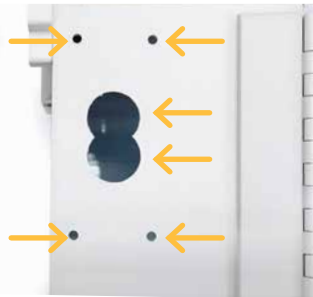
BOX FORMAT ASSEMBLY

1 Disconnect the power to the controller.

2 Remove the 4 screws that hold the keyboard.

3 Unscrew and remove the motherboard from the controller.

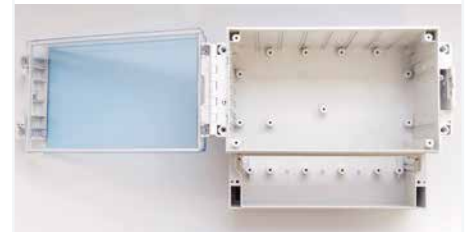
4 Mark and drill holes in the box following the instructions in the attached template.



IMPORTANT

Use the template to make the holes. If the holes are not made exactly as they should be, the components will not fit.

5 Place the connector and screws on the outside, and on inside attach the washers and sockets.



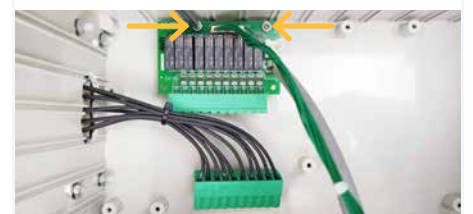
6 Cut the nylon screw located at the bottom of the box, closest to the window.



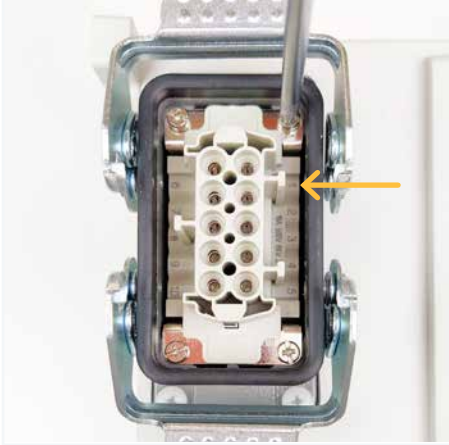
7 Place the green connector inside the box.



8 Place the expansion plate and the SHR screws.



9 Screw on the external connector; number 1 should be located on the right.



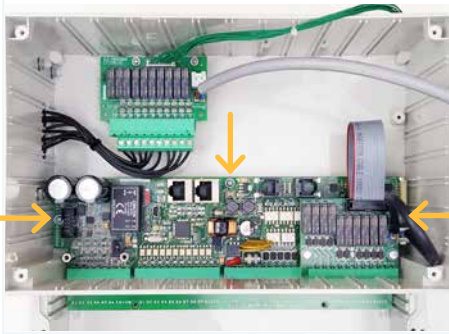
10 Plug the connector into the expansion board, leaving the left terminal (B11) free.



11 Plug in all the parts of the external connector, respecting the numbering.



12 Replace the motherboard by installing the 3 screws.



13 Disconnect the power cable from the motherboard, and connect it to the 30-output expansion board.



14 Connect the power cable and the data cable from the 30-output expansion board to the motherboard. The 30-output expansion power cable will be plugged into the same connector where the 20-output expansion power cable was.



15 Finish by fastening the 3 cables with a cable tie.



16 Close the controller by replacing the 4 screws removed in point 2.
If all the steps have been followed, the installation of the expansion from 20 to 30 outputs is complete.

Template for expansion holes from 20 to 30 outputs

LEFT SIDE

